

www.elledecor.in

ELLE DECOR

call for entries
**EDIDA
2018**

AUGUST – SEPTEMBER 2018, ₹150

Trending Now!

RAW NEOLITHIC
NEW MID-CENTURY
MODERN
LUMINOUS
KLEIN BLUE

People
We Love
TAKAHARU
TEZUKA
MATALI
CRASSET
FABIO
NOVEMBRE

CHILD'S PLAY

ENCHANTING REALITY FEATURING
MATURE NURSERIES, DYNAMIC FURNITURE,
PLAYFUL TRINKETS, CONTEMPORARY
WALLPAPERS & COSY BED LINEN



LIVING LUXE

Pravir Sethi of Studio Hinge rediscovers luxury at 219 Boat Club, a distinctive development of ten boutique residences by Merint Developers



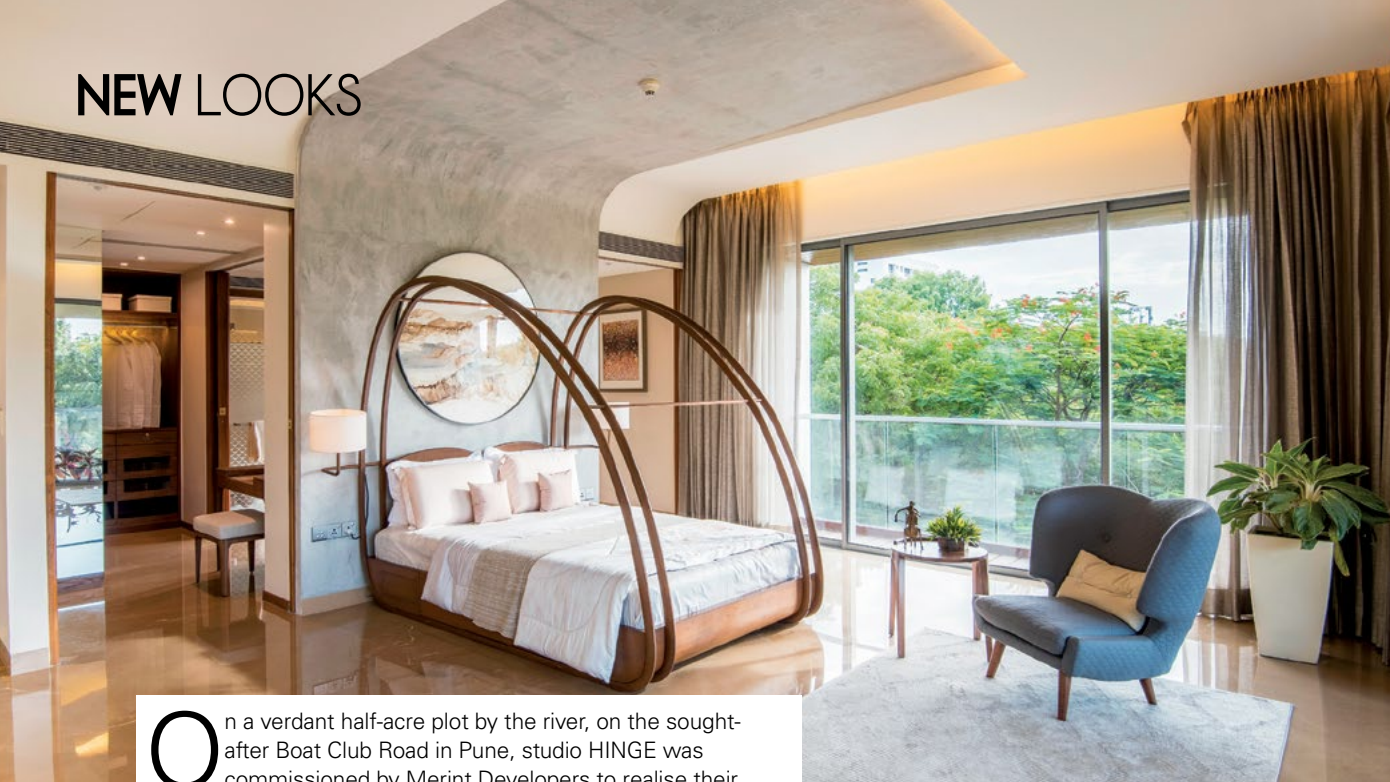
Clockwise, from Top A 20 ft wide frameless glazing at the entrance leads to the lobby featuring a light installation with 275 handblown glass bulbs, brass inserts and dynamic fibre optic lights; The double height living room accentuated with a claw chandelier that extends as a partition; The private lift lobby showcases doors in fluted teak wood and a wall crafted from undulating walnut veneer strips Photographs by Fabien Charvau and SquareOne courtesy studio HINGE



NEW LOOKS

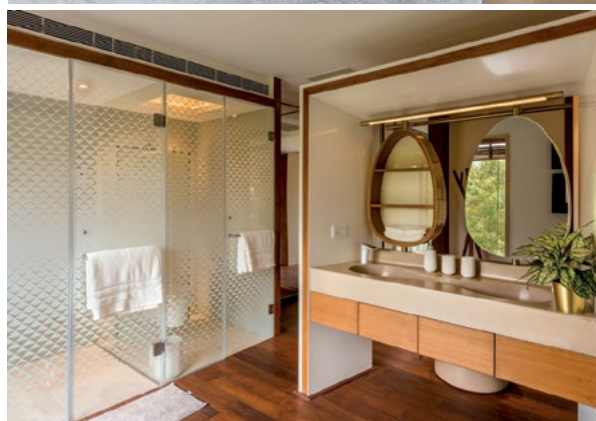
Looking up at the ceiling in the double height living area, one finds that the metal ribs of the divider continue upwards and fan out, creating a grand light fixture

NEW LOOKS



On a verdant half-acre plot by the river, on the sought-after Boat Club Road in Pune, studio HINGE was commissioned by Merint Developers to realise their vision of uber luxe apartments, master planned by international firm Atkins. Initially appointed as interior designers via an invited international competition, our scope was eventually expanded to architecture, facade and landscape, which essentially was determining aesthetic across the property. The 8, 000 sq ft apartments are replete with private pools, double heights and generous outdoor spaces. Placing fundamentals of space, light, proportion and utility over frills, we used design to re-interpret luxury. Service access is segregated throughout via distinct road entrances, vertical movement and entrance lobbies at every level (single apartment per floor) and carefully planned circulation routes all the way up to the clubhouse area at the terrace level. 12 ft deep recessed decks with 'disappearing windows' become one with double height living rooms, cleverly screened from the dining space by a bespoke claw-shaped wood and brass chandelier that sweeps up from the floor and across the ceiling. A private deck, bedroom, wardrobe and bathroom open up into each other through sliding doors and switchable 'magic' glass to comprise the 900 sq ft master suite (two per flat) surrounded by dense foliage. ♦ **Pravir Sethi**

Clockwise, from Top One of the master suites displays interconnection of spaces and has the Dray bed by Red Blue Yellow; A bespoke vanity unit frames rotatable egg-shaped mirrors, lighting in brass and cast solid surface basins; The sunken jacuzzi with custom enamel fritted glass shower partitions overlooks lush foliage; Each flat comes with a private infinity pool boasting a Brazilian walnut deck and privacy screen in fritted glass



**ELLE
DECOR
LOVES**

