

DESIGN DESTINATION: GDANSK

SPECIALIST: THE QUIRK WORKS

DESIGN QUEST: CRAFTTER

HOME REVIEW

VOL 17 ISSUE 07 JULY 2018 TOTAL PAGES 132

RS 100 HOME-REVIEW.COM

A LUSH SENSE OF CALM

FADD TAKES INSPIRATION FROM LE CORBUSIER
AND PIERRE JEANNERET TO CHANNEL ICONIC
DESIGN INTO A HOME

SMART WORK
VIKRAMA ARCHITECTURE AND DESIGN
SOLUTIONS THAT SPEAK VOLUMES
STUDIO HINGE

KITCHEN SPECIAL
AN IN-DEPTH LOOK INTO CUTTING EDGE
SOLUTIONS FOR OUR KITCHENS



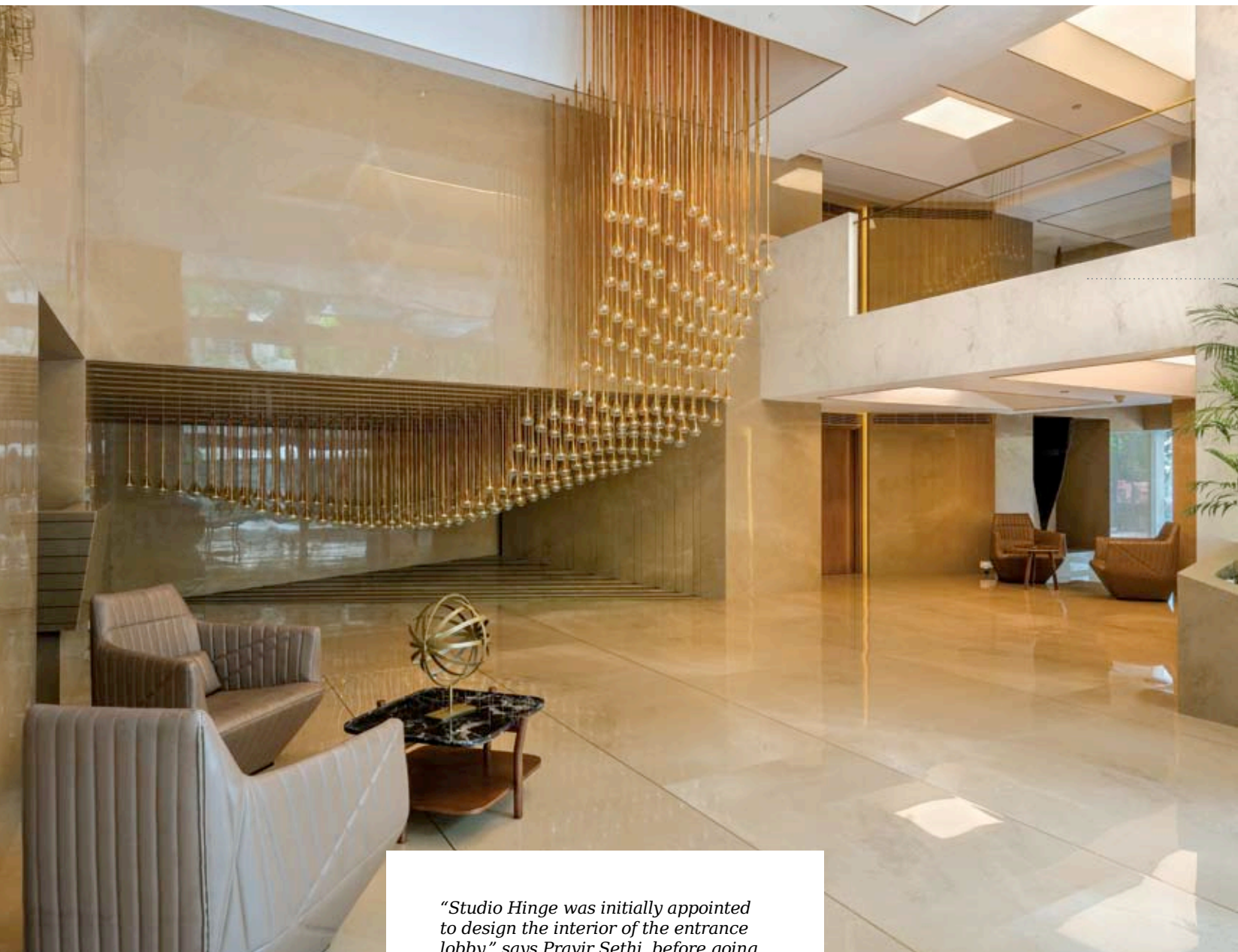
A full-fledged top view of the living room takes in every single design and interior aspect. The furniture was hand-chosen by Studio Hinge as well as Excella Worldwide, with a lot of pieces imported from overseas.



REDEFINING LUXURY

Mumbai-based architecture and interior design firm, Studio Hinge meld art, architecture, space and proportion for an ultra luxury apartment building in Pune.

Text By Priyanka Menon
Photographs Courtesy Fabien Charuau
and Squareone



"Studio Hinge was initially appointed to design the interior of the entrance lobby," says Pravir Sethi, before going on to divulge how the scope grew to accommodate the interiors of the 8000 sq. ft. show flat with its private pool, double-height living rooms, the rooftop deck, clubhouse and spa, along with the façade and landscape.

For Pravir and his firm Studio Hinge, this project was an opportunity to work on exclusive and bespoke furniture and interior design. The most engaging features of this bespoke creation are the installations inspired by art and architecture, tastefully interpolating the spaces within the sprawling 8000 sq.ft.

Of these, our favourite being the frozen waterfall in glass on the façade, a kinetic wind sculpture right above the main entrance and a lobby lighting installation with 270 hand blown glass, stems with brass inserts and programmable fibre optic lighting that respond to the occupants.

"The brief was to use design to reinterpret luxury living. The space has been designed from the inside out with luxury in mind and not as an afterthought," Pravir adds. While most apartment developers have a typical repertoire of amenities and premium finishes, 219 Boat Club boasts of a kind of luxury that has been paramount from the inception through to the execution of the property.

By extension, the fundamentals like space, proportion, natural light, ventilation, etc. were all major driving points that were kept in mind from the outset. The master bedroom is a sprawling space of 23 ft. x 17 ft. with windows and verandahs on two sides. The high-ceiling living room, verandahs and windows were designed to be 'parked' outside so as to allow a 100% clear opening.

Privacy was an imperative requisite throughout the making of this project with every floor having just one flat with a private lift lobby. "A custom designed ceramic frit pattern has been enameled onto the frameless glass lift in order to obscure visibility of the lobby while passing a particular floor in the lift," Pravir clarifies.

Upon the request of Fazal Manekia, Chairman, Merint Group, who didn't want the conventional Jacuzzi, the entire bathroom slab is sunk by 2 ft to allow a fully recessed Jacuzzi to be flush with the floor.



The fourth bedroom has direct access to the terrace. Ideal for evening parties, and intimate family dinners, the terrace is a cosy mix of warmth and luxury.



A full-fledged top view of the living room takes in every single design and interior aspect.



The bedroom is imbued with quiet simplicity and a colour palette that doesn't interfere with the natural light filtering through the curtains.



The bathroom is a true testament to the effusive style yet understated sophistication that Studio Hinge planned for the show flat.

The concept of luxury through utility found fruition in the design ideation and innovation brought into the space by Studio Hinge. A stellar example of this principle, and our personal favourite, is the conversion of the dry balcony area into a full-fledged kitchen, ideal for barbeque nights or wood-fired pizzas, etc. "Bespoke design and attention to detail is luxury," Pravin opines.

This further manifests in the custom designed vanity unit in one of the luxuriously appointed master bathrooms, with his & her washbasins in cast solid surface, held within a free-standing marble frame and an egg-shaped mirror as well as shelves on pivot. This allows for the unit to be utilised both as a washbasin and a dresser.

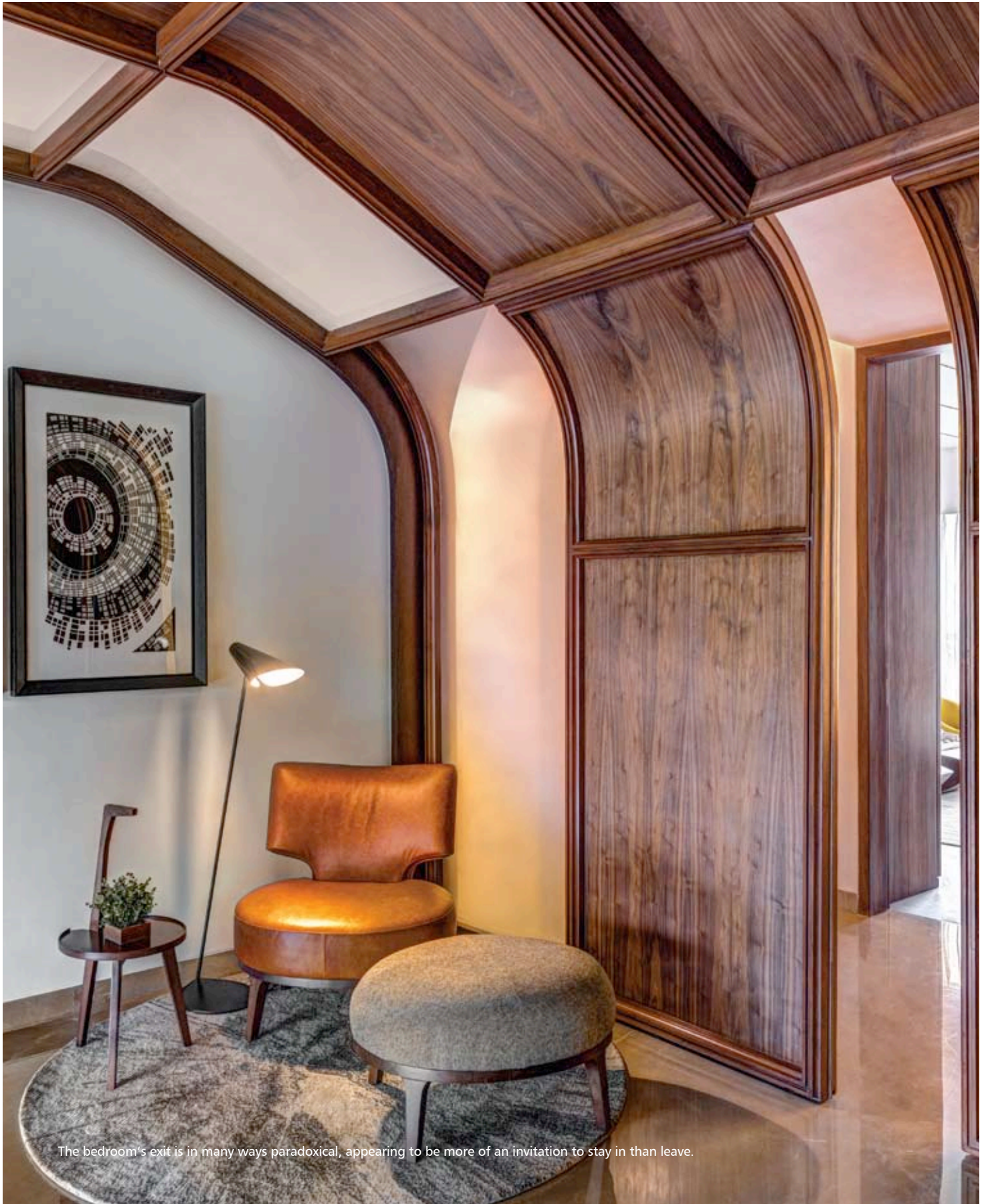
"The building section was developed to have interlocking double-height spaces by using staggered volumes and alternating the orientation of living rooms," Pravin adds. The 23 ft. long private pools with each flat provide an interesting infinity or edge overflow feature on the façade. Throughout the height of the building, an 8 ft. x 8 ft. light well filters in natural daylight.

"To avoid dreariness which inevitably comes with passages, the third bedroom of the show flat has provisions for it to be converted into a lounge with a clever play of doors that slide and fold to completely open the room into the lounge and bring in further space and natural light," Pravin goes on.

One of the biggest challenges faced by Studio Hinge was in understanding and interpreting the requirements of a potential buyer in a property as grand as this, particularly because the clients for any show flat will always be multifarious and hypothetical.

The lighting system at 219 Boat Club is quite honestly wondrous to behold. "Warm LED lighting has been used, and is connected to the Schneider home automation system," Pravin says. With the light consultants and architects working closely with Studio Hinge, a lot of the communication was streamlined. Studio Hinge also designed several bespoke light installations like the 'claw' space divider and chandelier in the living room, in teak wood, brass and custom made LED pendants.

Above and beyond this, Studio Hinge has used a horde of environment-friendly measures. Features like instant (tank-less) water heaters, double glazing in the windows with high performance (low-emissivity) glass, motion sensor controls for the washroom and entrance lobby lights, etc., all drive the property towards a more sustainable future.



The bedroom's exit is in many ways paradoxical, appearing to be more of an invitation to stay in than leave.

Now that's a view! The rooftop pool offers a captivating view of Pune's skyline, along with its own brand of living-on-the-edge privacy.



The fact, that at the outset the brief which was just to design the entrance lobby was later extended to have Studio Hinge design the show flat of 219 Boat Club as well, clearly proves the fact that Merint Developers had complete trust in the design firm and was also a testament to its quality of work, since this project was Merint Developers' very first project in India. This now, is quite an accolade!

✉ www.studiohinge.in